

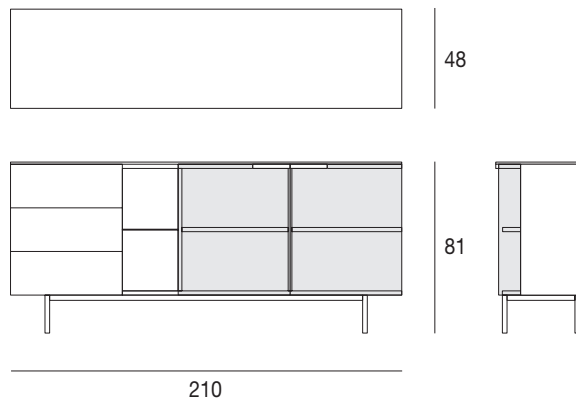
design Cesare Arosio

star

Madia con struttura placcata noce canaletto. Cassetti, con apertura push & pull, vano a giorno con ripiano vetro e vano contenitore con ripiani placcati noce canaletto. Ante in vetro naturale o bronzato-trasparente. Anta destra dotata di una speciale cerniera con apertura angolare.

Maniglie e basamento in metallo verniciato ottone patinato.
Sideboard with structure veneered canaletto walnut. Drawers, with push & pull opening, open compartment with glass shelf and closes compartment with wooden shelves veneered canaletto walnut. Clear or transparent bronze glass doors. Right door with special corner opening.
Handle and base in metal painted in brushed brass color.

cupboard
cod.5565



laccato opaco poro aperto
open pore matt lacquered

legno
wood

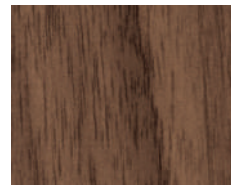
L21

bianco opaco
poro aperto
*open pore
matt white*



NK

noce canaletto
canaletto walnut



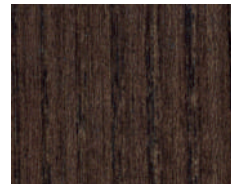
L29

madreperla opaco
poro aperto
*open pore
matt pearl*



TB

frassino o noce
canaletto tinto tabacco
*ash or canaletto
walnut stained tobacco*



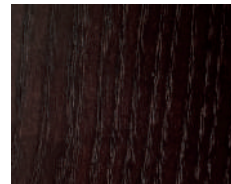
L23

cappuccino opaco
poro aperto
*open pore matt
cappuccino colour*



WG

frassino o noce
canaletto tinto wengè
*ash or canaletto
walnut stained wengè*



L28

grigio medio
poro aperto
*open pore matt
medium grey*



MK

frassino o noce
canaletto tinto moka
*ash or canaletto
walnut stained moka*



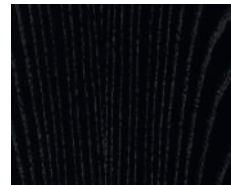
L25

grigio fumo opaco
poro aperto
*open pore matt
smoke grey*



TN

frassino o noce
canaletto tinto nero
*ash or canaletto
walnut stained black*



L22

nero opaco
poro aperto
*open pore
matt black*



L24

rosso opaco
poro aperto
*open pore
matt red*



I colori riprodotti sono da ritenersi puramente indicativi.
The colours shown here should be taken as purely indicative.