



**Kolekcja tkanin  
i wybarwień drewna**



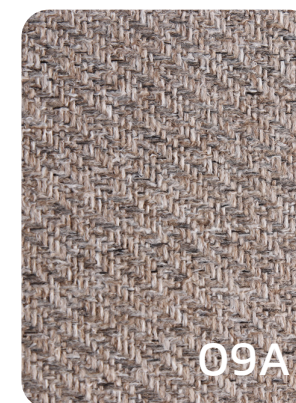
GRUPA CENOWA

1

ARTE



84A



09A

**Composition:** 100% polyester  
**Martindale:** 100 000 cycles  
**Weight:** 290 g/m<sup>2</sup> +/- 5%



EASY CLEAN

COVER



92



15



87

**Composition:** 100% polyester  
**Martindale:** 100 000 cycles  
**Weight:** 285 g/m<sup>2</sup> +/- 5%

MONOLITH



09



77

**Composition:** 100% polyester  
**Martindale:** >100 000 cycles  
**Weight:** 330 g/m<sup>2</sup> +/- 5%



WATER REPELLENT

ICON



06

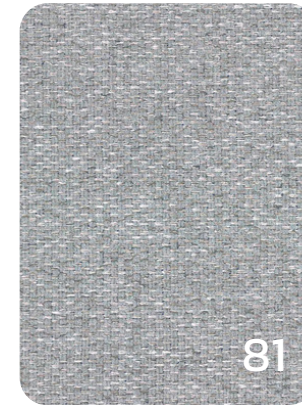


39

**Composition:** 100% polyester  
**Martindale:** 45 000 cycles  
**Weight:** 330 g/m<sup>2</sup> +/- 5%



GRANDE



81

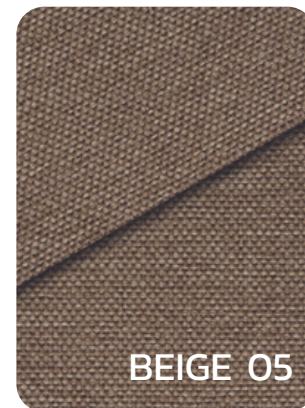


03

**Composition:** 100% polyester  
**Martindale:** 45 000 cycles  
**Weight:** 310 g/m<sup>2</sup> +/- 5%



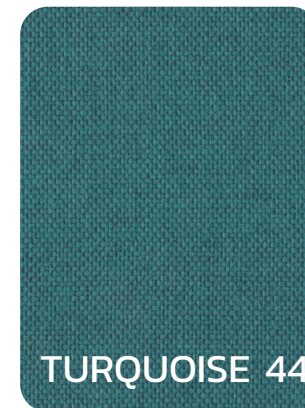
BOARD



BEIGE 05



NATURAL 77



TURQUOISE 44



LIGHTGREY 60

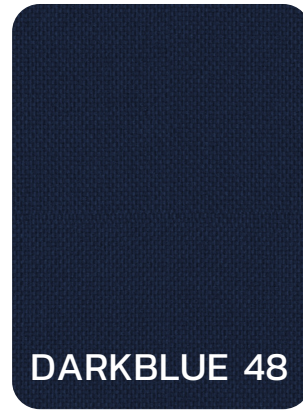
**Composition:** 100% polyester  
**Martindale:** 32 000 cycles  
**Weight:** 399 g/m<sup>2</sup>



## BOARD



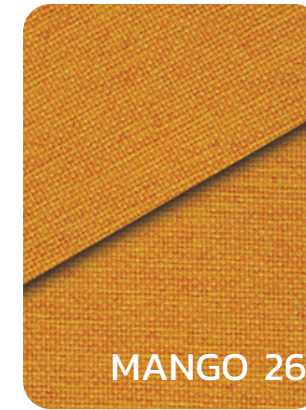
ANTHRACITE 67



DARKBLUE 48



GREY 65



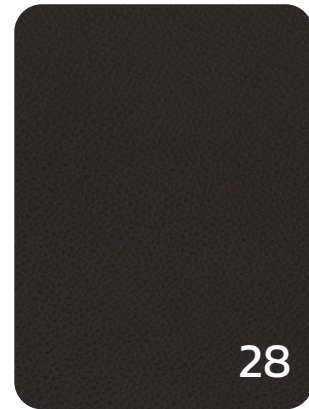
MANGO 26

**Composition:** 100% polyester  
**Martindale:** 32 000 cycles  
**Weight:** 399 g/lm

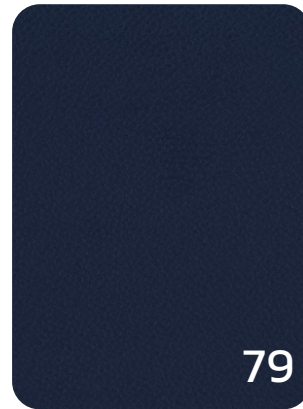
## SOLAR



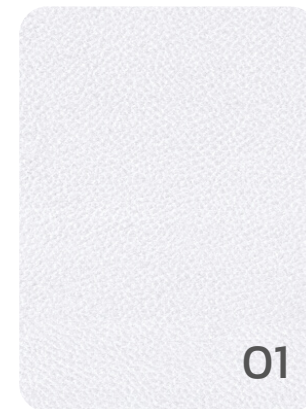
37



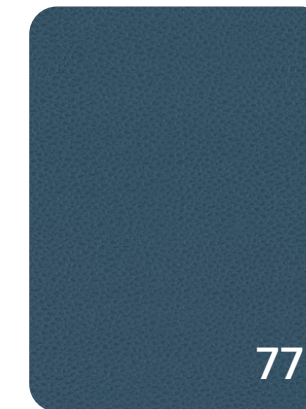
28



79



01



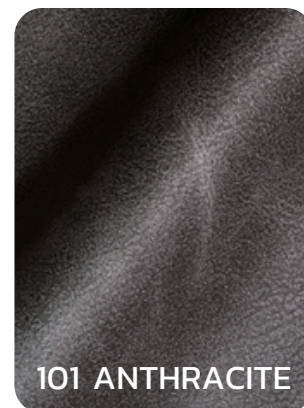
77

**Composition:** 100% polyester  
**Martindale:** 70000–78000 cycles  
**Weight:** 370 g/m<sup>2</sup> +/- 5%



EASY CLEAN

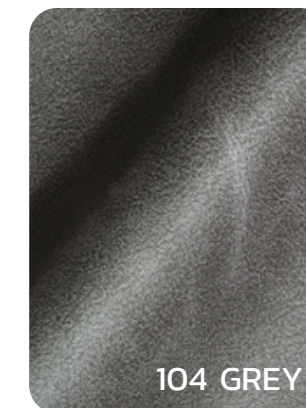
## PU VINTAGE



101 ANTHRACITE



215 COGNAC



104 GREY

**Composition:** 65% polyurethane, 25% polyester,  
 10% cotton  
**Martindale:** 50 000 cycles  
**Weight:** 428 g/m<sup>2</sup> +/- 5%



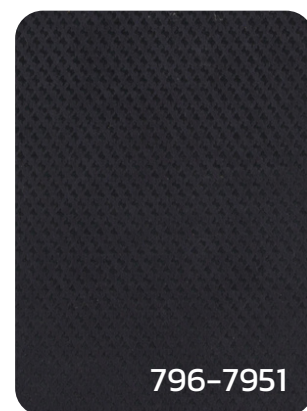
GRUPA CENOWA

2

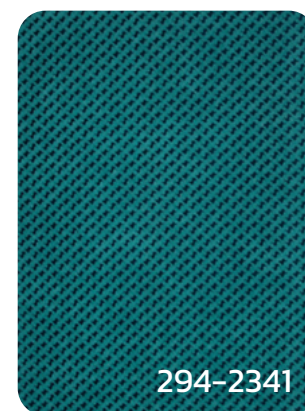
MARISA



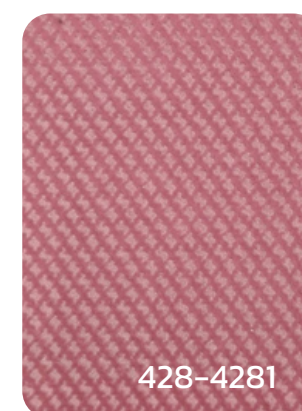
528-560



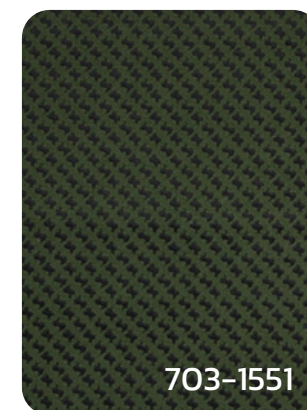
796-7951



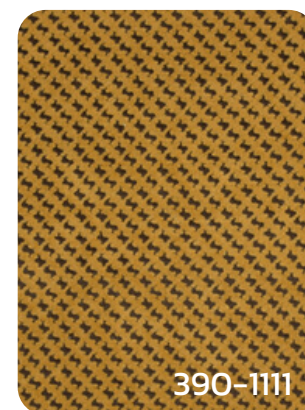
294-2341



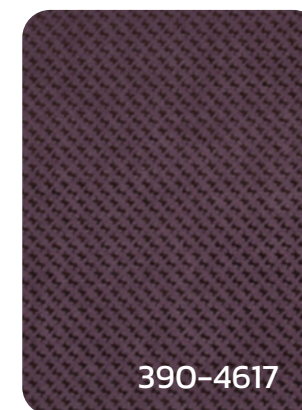
428-4281



703-1551



390-1111



390-4617

**Composition:** 66% polyester,  
17% polyurethane, 17% acrylic  
**Martindale:** 100 000 cycles  
**Weight:** 330 g/m<sup>2</sup> +/- 5%



TOWN



23



25

**Composition:** 100% polyurethane  
**Martindale:** >102 400 cycles  
**Weight:** 480 g/m<sup>2</sup>



Próbki kolorów mają charakter poglądowy.



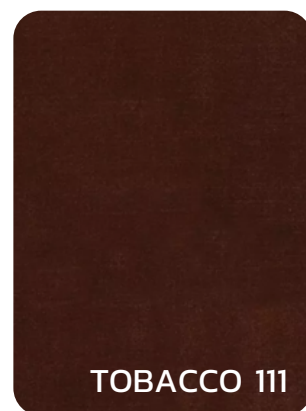
GRUPA CENOWA

3

ADORE



COFFEE 81



TOBACCO 111



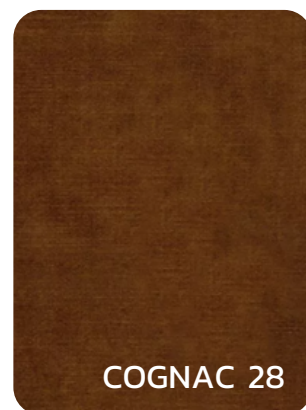
DOLPHIN 180



NATURAL 01



BEIGE 05



COGNAC 28



ANTHRACITE 67



HUNTER 156



MOSS 59

**Composition:** 100% polyester  
**Martindale:** 88 000 cycles  
**Weight:** 580 g/lm

MATRIX



ZINC

**Composition:** 100% polyester  
**Martindale:** 40 000 cycles  
**Weight:** 653 g/lm

Próbki kolorów mają charakter poglądowy.



TENDER WAY



80



97



77

**Composition:** 100% polyester  
**Martindale:** 85000–95000 cycles  
**Weight:** 470 g/lm

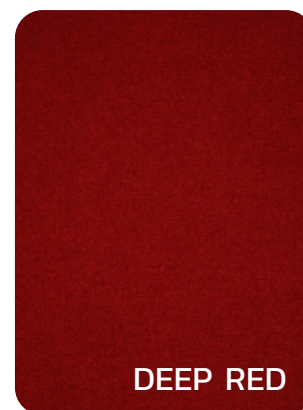
CASINO



OLIVE YELLOW



LION



DEEP RED

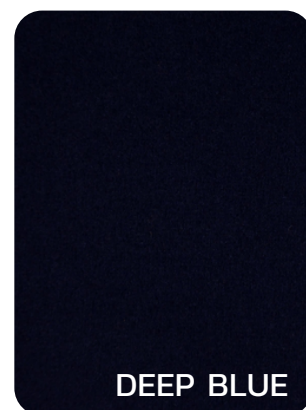


SAPHIRA



OCTANE

**Composition:** 100% polyester  
**Martindale:** 100 000 cycles  
**Weight:** 639 g/m<sup>2</sup> +/- 5%



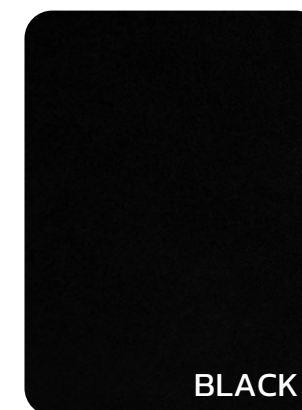
DEEP BLUE



BORDEAUX



ASH



BLACK



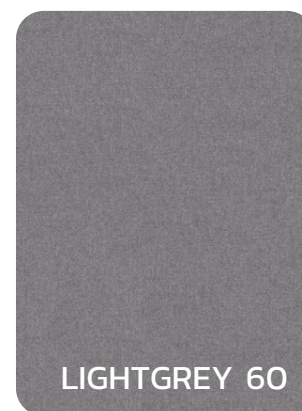
JAZZ



BEIGE 05



NATURAL 01



LIGHTGREY 60



LEMON 122

**Composition:** 100% polyester  
**Martindale:** 72 000 cycles  
**Weight:** 490 g/m<sup>2</sup> +/- 5%



PETROL 60



ONYX 169

---

GOOD MORNING



75P



79P

**Composition:** 50% polyester, 31% viscose,  
12% linen, 7% cotton  
**Martindale:** 76 000–84 000 cycles  
**Weight:** 540 g/m<sup>2</sup> +/- 5%



GRUPA CENOWA

4

MINE

LIME 57

PETROL 56

DENIM 153

MANGO 26

**Composition:** 100% polyester

**Martindale:** 45 000 cycles

**Weight:** 574 g/m<sup>2</sup> +/- 5%

GREY 65

SHELL 196

AZURE 144

DOLPHIN 180

NIGHTSHADE 168

HEARTLAND

PLUM 24

**Composition:** 100% polyester

**Martindale:** 40 000 cycles

**Weight:** 442 g/m<sup>2</sup> +/- 5%



Próbki kolorów mają charakter poglądowy.



## DELUXE



13 GRIFFIN

**Composition:** 100% polyester  
**Martindale:** 100 000 cycles  
**Weight:** 419 g/m<sup>2</sup>

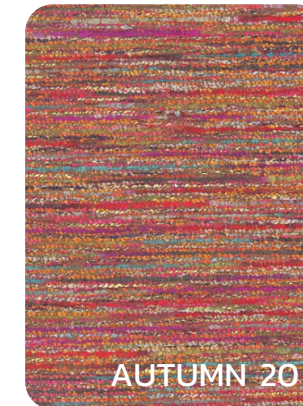


EASY CLEAN

## MANTILLA



CACTUS 16



AUTUMN 20

**Composition:** 76% polyester  
21% viscose, 3% cotton  
**Martindale:** 40 000 cycles  
**Weight:** 442 g/m<sup>2</sup> +/- 5%



WATER REPELLENT

EASY CLEAN

## IMPERIAL



32



30

**Composition:** 100% polyester  
**Martindale:** 100 000 cycles  
**Weight:** 444 g/m<sup>2</sup> +/- 5%

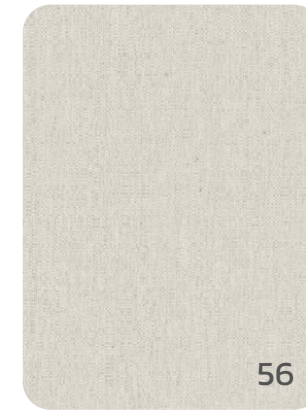


WATER REPELLENT

EASY CLEAN



## AMARAL



56



300

**Composition:** 96% polyester,  
4% cotton

**Martindale:** 60 000 cycles

**Weight:** 551 g/m<sup>2</sup> +/- 5%



## BELLAGIO



01



515



451



14

**Composition:** 100% polyester

**Martindale:** 100 000 cycles

**Weight:** 404 g/m<sup>2</sup> +/- 5%



## FACET



NATURAL 01



PETROL 56

**Composition:** 75% wool, 25% polyamide

**Martindale:** 100 000 cycles

**Weight:** 600 g/m<sup>2</sup> +/- 5%



DOLLY



WHITE



LIGHT GREY

**Composition:** 94% polyester, 6% cotton  
**Martindale:** 100 000 cycles  
**Weight:** 976 g/m<sup>2</sup> +/- 5%

TOLEDO



BIANCO



MOCCA



NERO

**Composition:** natural leather

MINGLE MANGLE



FUCHSIA 14



CASCADE 04

**Composition:** 100% polyester  
**Martindale:** 100 000 cycles  
**Weight:** 495 g/m<sup>2</sup> +/- 5%

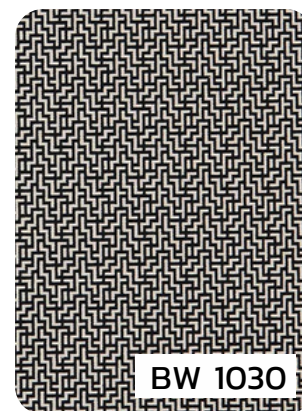




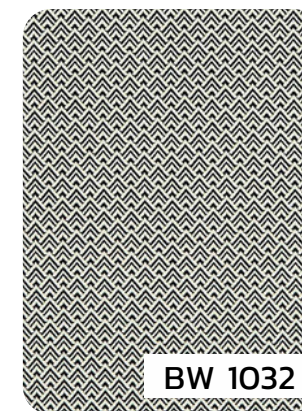
BLACK&WHITE



BW 1038



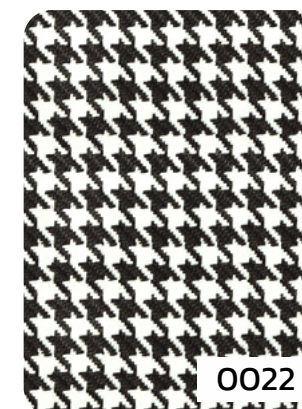
BW 1030



BW 1032

Composition: 44% polyester,  
31% viscose, 25% cotton  
Martindale: 15 000 cycles  
Weight: 404 g/m<sup>2</sup> +/- 5%

FRESCO



0022

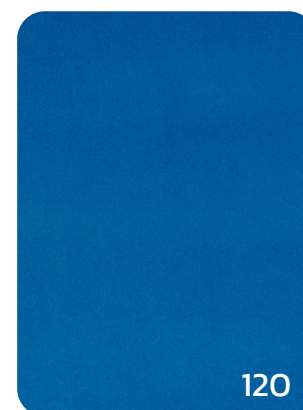
Composition: 100% polypropylene  
Martindale: 40 000 cycles



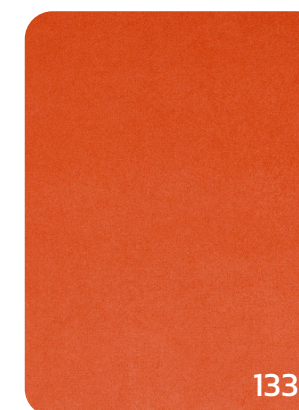
CROWN VELVET



21



120



133

Composition: 100% polyester  
Martindale: 120 000 cycles  
Weight: 535 g/m<sup>2</sup> +/- 5%



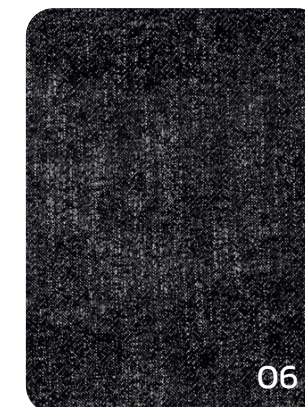




MARBLE



08



06

**Composition:** 50% polyester,  
28% viscose, 12% linen, 10% cotton  
**Martindale:** 45 000 cycles  
**Weight:** 653 g/m<sup>2</sup> +/- 5%

VINTAGE



BROWN



COGNAC



GREY

**Composition:** natural leather  
(aniline leather)



KOLORY NÓG

DREWNO



METAL



MOVANO

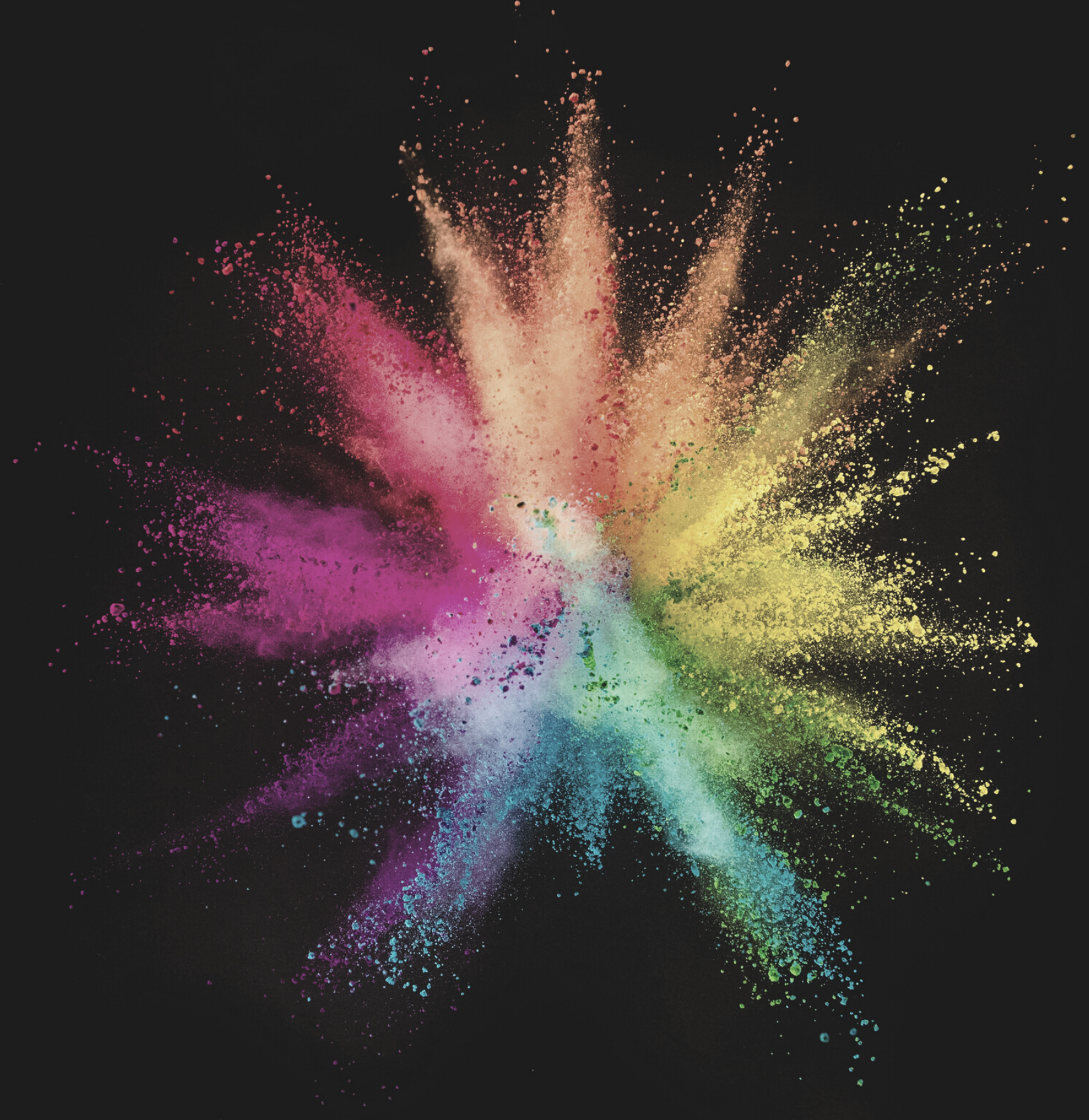


Próbki kolorów mają charakter pogładowy.





**CLAUDIE**  
design



[www.claudie.pl](http://www.claudie.pl)